



Welcome!

Child Development and Education

Our top mission while working with priority populations is to provide the most thorough and supportive resources in order to help our families work towards reaching their child's optimal growth and development, by offering them the necessary tools.

By compiling a list of programs, we guide each family through the process of accessing the resources which promote family literacy, social services, case management, etc.

We are able to refer families to local licensed family therapists, mental health professionals and many more services listed on this pamphlet.

Child Development and Education, Inc.

West Boylston Staff Directory

Office Director: Gail Bissonnette

EMAIL: gbissonnette@cdedu.co

Administrator Director: Stephanie Beauregard

EMAIL: sbeauregard@cdedu.co

Contract Manager: Wanda Rivera

EMAIL: wrivera@cdedu.co

Parent Fee Administrator: Fran Irizarry

EMAIL: firizarry@cdedu.co

Payroll /Billing Administrators:

Shirley Cornejo EMAIL: scornejo@cdedu.co

Tasha Woodard EMAIL: twoodard@cdedu.co

Family Child Care Coordinators:

Amparo Munoz

Alma Matos

Yvonne Amezcua

Blanca Molina

Ana Farias-Framingham

Child Development & Education, Inc.

354 West Boylston Street,

Suite 112, West Boylston, MA 01583

(Phone): **508-852-5020** (Fax): **508-852-5657**

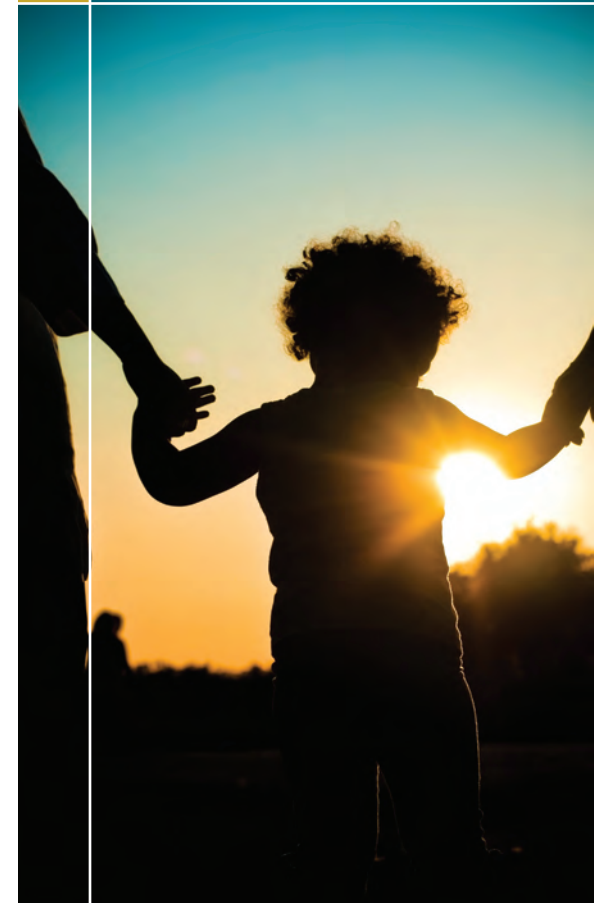
www.cdedu.us / info@cdedu.us



Child Development and Education

Child Development and Education

A Resource Guide for Priority Population Families



Resource Guide

Battered Woman's Resources

Fitchburg-978-345-1008
Greater Worcester-508-755-9030
Framingham-508-626-8686

Services:

Emergency food/clothing, advocacy, support groups, visiting nurse, wheelchair accessible, counseling, referral, mental health and transitional program, Spanish speaking staff, childcare, teen living program, legal services.

Catholic Charities

- Greater Worcester- 508-753-3084
- Leominster-978-840-0696
- Athol-978-249-4563

Services:

- Counseling
- Adult Education
- Healthy Families
- Young Parent Program

Early Intervention

www.massfamilyties.org/ei/eicity.php
Leominster/Fitchburg 978-840-9354
REACH Athol/Orange 413-665-8717
EC Alliance Framingham 508-782-6932

Services:

Early Intervention is a developmental service available to the families of children from birth up to the third birthday, for whom there are developmental concerns due to identified disabilities, or whose typical development is at risk due to certain birth or environmental circumstances.



Heating Assistance Programs

- Good Neighbors Energy fund 800-334-3047
- National Grid 800-322-3223
- NEFW-Fuel Assistance 978-342-4520
- SMOC-Framingham 508-620-1230
- Unitil Fitchburg 888-301-7700

Healthy Families

Gardner 978-632-1230
Framingham 508-881-9495
Orange 413-475-1545
WIC 800-942-1007

Services:

- Parenting support resources
- Parenting classes
- Personal goals
- For young first time mom and dads

Individuals at Risk

- Child at risk hotline 800-792-5200
- Parental Stress line 800-632-8188
- Parents helping parents 800-882-1250
- Disabled person protection 800-426-9009

Legal Aid

- Fitchburg 508-752-3718
- Worcester 800-649-3718
- North Adams 413-664-4531
- Framingham 508-620-1830

Services:

Families and Children Unit provides legal assistance to victims of domestic violence, restraining orders, divorce, paternity, custody and visitation, child support, spousal support, property division and health insurance, relocation, including filing name change petitions in appropriate situations.

Massachusetts Society for the Prevention of Cruelty to Children (MSPCC)

335 Chandler St
Worcester, MA 01602
508-753-2967
<http://www.mspcc.org/>

Services:

Funded by the Department of Early Education and Care for children in childcare settings provided by Children's Friend, Open to all in the northeast region.

Medical Resources

Community Health Links
Fitchburg 978-665-5901
Gardner 978-665-5980
Athol 978-249-3511
Worcester 508-860-1000

Services:

- Primary Health care
- Dental
- Free/low cost walk in clinics
- Behavioral Health
- Servicing children and families

Worcester County Food Banks

www.foodbank.org

- Fitchburg/Leominster community action center 978-342-8617
- Loaves and Fishes Devens 978-772-4627
- Gardner community action 978-632-1350
- Spanish American center 978-534-3145
- UWTC Framingham 888-811-3291
- Salvation Army Athol 978-249-8111
- Catholic Charities Worcester 508-860-2250

Services:

Worcester County Food Bank (WCFB) is aware of many resources available to provide additional food and nutrition assistance for individuals and families in need. If you are in need of additional food and nutrition assistance, please contact these programs directly to learn more.

