



Welcome!

Child Development and Education

Our top mission while working with priority populations is to provide the most thorough and supportive resources in order to help our families work towards reaching their child's optimal growth and development, by offering them the necessary tools.

By compiling a list of programs, we guide each family through the process of accessing the resources which promote family literacy, social services, case management, etc.

We are able to refer families to local licensed family therapists, mental health professionals and many more services listed on this pamphlet.

Child Development and Education, Inc.

Haverhill Staff Directory

Office Director:

Claudia Hoyos
EMAIL: choyos@cdedu.co

Administrator/Contract Manager

Rhina Silfa
EMAIL: rsilfa@cdedu.co

Family Child Care Coordinator:

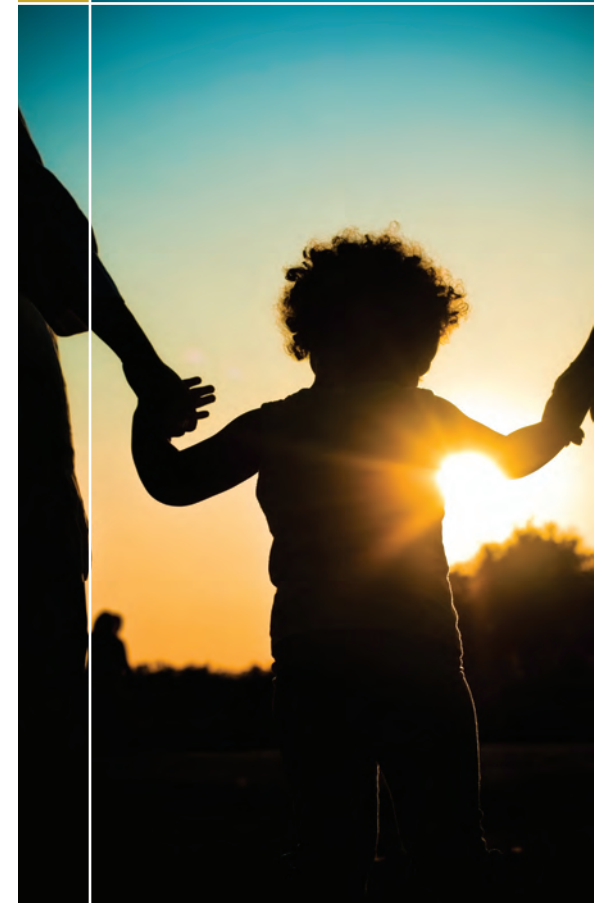
Maribel Saldarriaga
EMAIL: msaldarriaga@cdedu.co

Child Development & Education, Inc.

80-76 Merrimack Street, Suite 8A,
Haverhill, MA. 01830
(Phone): **978-372-0619** (Fax): **978-372-2451**
www.cdedu.us / info@cdedu.us

Child Development and Education

A Resource Guide for Priority Population Families



Resource Guide

Angel Care Kids Therapy

969 Main St
Haverhill, MA 01830
(978)521-6150
www.angelcarekids.com

Services:

- Occupational Therapy
- Speech and Language Therapy
- Dynamic Listening
- Evaluations Sensory Integration
- Therapeutic Groups

Arbour Counseling Services

116 Summer St
Haverhill, MA 01830
(978)373-7010
www.arbourhealth.com

Services:

- Attention Deficit Disorder (child & adult)
- Behavior Disorders
- Child & Adolescent Psychiatry
- Domestic Violence



Massachusetts Society for the Prevention of Cruelty to Children (MSPCC)

439 Union Street Suite 1-110
Lawrence, MA 01843
a(978) 682-9222
<http://www.mspcc.org>

Services:

- Funded by EEC for children in childcare settings provided by Children's Friend, Open to all in the northeast region.

Priority Professional Care

15 Union Street
Lawrence Ma 01840
(978) 655-7782
<http://www.ppcboston.com>

Services:

- Individual Therapy
- Group Therapy
- Family and Couples Therapy
- Adolescent Stabilization

South Bay Community Services

360 Merrimack Street Building 5 Entrance F
Lawrence Ma 01843
(978) 620-0290
<https://www.southbaycommunityservices.com>

Services:

- Early Childhood Services
- Early Intervention/Birth to Three Services
- Children's Behavioral Health Initiative Services
- Mental Health and Substance Abuse Counseling Services

Leahy Behavioral Services

12 Methuen Street
Lawrence Ma 01840
(978) 683-3128
<http://www.cpemass.org>

Services:

- Individual, family, group, couples Therapy
- Psychiatric Services
- Crisis Management
- Youth Social Skills Groups
- Adult Wellness Groups

Professional Center for Child Development

439 S. Union Street
Lawrence, MA 01843
(978) 688-5070
<http://theprofessionalcenter.org>

Services:

- Early Intervention
- Pediatric Therapy Program
- 2x2 Toddler Play Groups
- Regional Consultation Program

