



Welcome!

## Child Development and Education

Our top mission while working with priority populations is to provide the most thorough and supportive resources in order to help our families work towards reaching their child's optimal growth and development, by offering them the necessary tools.

By compiling a list of programs, we guide each family through the process of accessing the resources which promote family literacy, social services, case management, etc.

We are able to refer families to local licensed family therapists, mental health professionals and many more services listed on this pamphlet.

## Child Development and Education, Inc.

### Lowell Staff Directory

**Office Director:** Ybelka Ortiz

EMAIL: [yortiz@cdedu.co](mailto:yortiz@cdedu.co)

**Administrative Director:**

Yazmin Marrero

EMAIL: [ymarrero@cdedu.co](mailto:ymarrero@cdedu.co)

**Contract Manager:**

Minerva De Jesus Iraola

EMAIL: [mdejesus-iraolae@cdedu.co](mailto:mdejesus-iraolae@cdedu.co)

**Family Focus Specialist:**

Elizabeth Torres

EMAIL: [etorres@cdedu.co](mailto:etorres@cdedu.co)

**Parent Fee Administrator:**

Jennis Olivo

EMAIL: [jolivo@cdedu.co](mailto:jolivo@cdedu.co)

**Payroll Administrator:**

Priscilla Paredes

EMAIL: [pparedes@cdedu.co](mailto:pparedes@cdedu.co)

**CDE Administrator:**

Dilena Cabral - [dcabral@cdedu.co](mailto:dcabral@cdedu.co)

Nataly Ceden - [nceden@cdedu.co](mailto:nceden@cdedu.co)

**Family Child Care Coordinators:**

Zaida Cochran - [zcochran@cdedu.co](mailto:zcochran@cdedu.co)

Soris Villar - [svillar@cdedu.co](mailto:svillar@cdedu.co)

**Child Development and Education, Inc.**

12 Methuen Street, Lawrence, MA 01840

(Phone): **978-687-9133** (Fax): **978-687-9533**

[www.cdedu.us](http://www.cdedu.us) / [info@cdedu.us](mailto:info@cdedu.us)

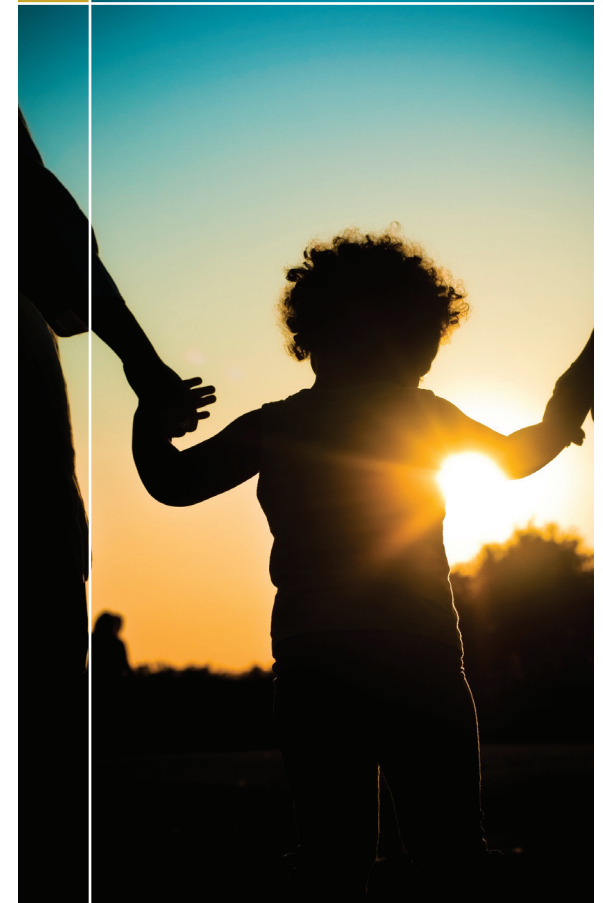


Child Development and Education

## Child Development and Education

A Resource Guide for Priority Population Families

**LOWELL**



# Resource Guide

## **South Bay Community Services Lowell Early Childhood Services**

22 Old Canal Drive  
Lowell, MA 01851  
(978) 452-1736  
[www.southbaycommunityservices.com](http://www.southbaycommunityservices.com)

### **Services:**

- Early Childhood Services
- Children's Behavioral Health Initiative Services
- Mental Health & Substance Abuse Counseling

## **Lowell Public Schools Early Childhood Programs & Services**

155 Merrimack Street  
Lowell, MA 01852  
Contact: Lisa Van Thiel  
(978) 674-2051  
[www.lowell.k12.ma.us](http://www.lowell.k12.ma.us)

### **Services:**

- Parent Child Home Program
- Playgroups
- Positive Solutions for Families
- Special Education Assessment



## **Thom Child & Family Services Anne Sullivan Center**

126 Phoenix Avenue  
Lowell, MA 01852  
(978) 453-8331  
[www.thomchild.org/anne-sullivan-center.htm](http://www.thomchild.org/anne-sullivan-center.htm)

### **Services:**

- Early Intervention Programs
- Pregnancy & Newborn Support

## **Leahy Behavioral Services**

12 Methuen Street  
Lawrence, MA 01840  
(978) 683-3128  
[www.bilhbehavioral.org](http://www.bilhbehavioral.org)

### **Services:**

- Individual, family, group, couples therapy
- Psychiatric Services
- Crisis management
- Youth Social Skills Groups
- Adult Wellness Groups

## **Massachusetts Society for the Prevention of Cruelty to Children (MSPCC)**

15 Union Street, Bldg. E, Suite 115  
Lawrence, MA 01840  
(978) 682-9222  
[www.mspcc.org](http://www.mspcc.org)

### **Services:**

- Funded by EEC for children in childcare settings provided by Children's Friend, Open to all in the northeast region.

## **Autism Care Partners**

439 South Union St.  
Building 1, Suite 116  
Lawrence, MA 01843  
800-679-3609  
[www.autismcarepartners.com](http://www.autismcarepartners.com)

