



Welcome!

## Child Development and Education

Our top mission while working with priority populations is to provide the most thorough and supportive resources in order to help our families work towards reaching their child's optimal growth and development, by offering them the necessary tools.

By compiling a list of programs, we guide each family through the process of accessing the resources which promote family literacy, social services, case management, etc.

We are able to refer families to local licensed family therapists, mental health professionals and many more services listed on this pamphlet.

## Child Development and Education, Inc.

### New Bedford Staff Directory

**Office Director:**

Molly Barnes - [mbarnes@cdedu.co](mailto:mbarnes@cdedu.co)

**Contract Managers:**

Gretchen Cabral - [gcabral@cdedu.co](mailto:gcabral@cdedu.co)

Kenya Williams - [kwilliams@cdedu.co](mailto:kwilliams@cdedu.co)

**Administrative Director:**

Maritza Ruiz - [mrui@cdedu.co](mailto:mrui@cdedu.co)

**Payroll Administrator:**

Emilia Goncalves - [egoncalves@cdedu.co](mailto:egoncalves@cdedu.co)

**Family Child Care Coordinator:**

Dawn McNeill - [dmcneill@cdedu.co](mailto:dmcneill@cdedu.co)

**Child Development and Education, Inc.**

38 Elm Street

New Bedford, MA 02740

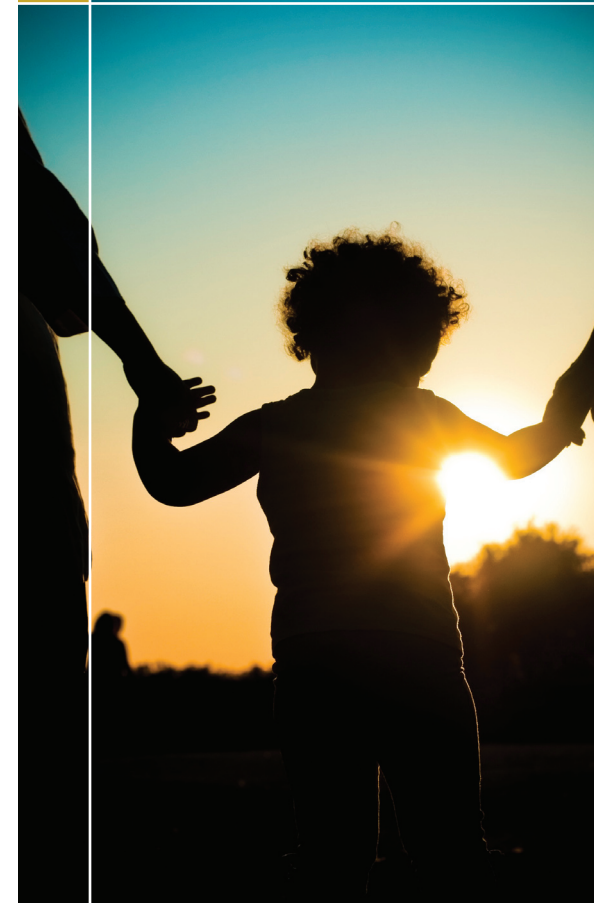
(Phone): 508-993-0745 (Fax): 508-993-0748

[www.cdedu.us](http://www.cdedu.us) / [info@cdedu.us](mailto:info@cdedu.us)

## Child Development and Education

A Resource Guide for Priority Population Families

**NEW BEDFORD**



# Resource Guide

## Justice Resource Institute

35 Summer Street  
Taunton, MA 02780  
(508) 828-1308  
[jri.org](http://jri.org)

### Services:

- On-site observations of children
- Develop individualized intervention plans
- Engage and support families
- Offer resources & referral information

## People Acting in Community Endeavors, Inc. (PACE)

166 William Street  
New Bedford, MA 02740  
(508) 999-9920  
[paceinfo.org](http://paceinfo.org)

### Services:

- Fuel Assistance
- Health Access
- Head Start
- Child Care Works
- The Family Center
- Emergency Food Bank
- Housing Services
- Tax Preparation



## Kennedy Donovan Center

Early Intervention  
19 Hawthorn Street  
New Bedford, MA 02740  
(508) 997-1570  
[www.kdc.org](http://www.kdc.org)

### Services:

- Early Intervention Services include parent education; physical, speech/language and occupational therapies; service coordination; nutrition; socialization groups; and transition-to-school planning. These services are provided in natural settings such as home, child care centers or community play groups at KDC.

## Healthy Families

385 County Street  
New Bedford, MA 02740  
(774) 206-8810

### Services:

- A home-based parent support and coaching program available for first-time parents age 20 and under. Available from pregnancy until your child's third birthday.

## Child & Family Services

543 North Street  
New Bedford, MA 02740  
(508) 999-9920  
[child-familyservices.org](http://child-familyservices.org)

### Services:

- Child Behavioral Health Services
- Adult Behavioral Health Services
- Community Based Acute Treatment
- Community Crisis Stabilization
- Emergency Services (Crisis Center)

## Department of Transitional Assistance

160 West Rodney French Boulevard  
New Bedford, MA 02744  
(508) 961-2000  
[www.mass.gov/eohhs/gov/departments/dta](http://www.mass.gov/eohhs/gov/departments/dta)

### Services:

- Food Assistance: SNAP
- Job Assistance
- Cash Assistance

## Department of Children and Families

98 North Front Street  
New Bedford, MA 02740  
(508) 910-1000  
[www.mass.gov/eohhs/gov/departments/dcf](http://www.mass.gov/eohhs/gov/departments/dcf)

### Services:

- Child Abuse & Neglect
- Foster Care
- Adoption
- Adolescent Services
- Health & Medical Services

## Greater New Bedford Career Center

618 Acushnet Ave  
New Bedford, MA 02740  
(508) 990-4000  
[newbedfordcareercenter.org](http://newbedfordcareercenter.org)

### Services:

- Job Search Assistance
- Resource Center for Job Search
- Job Matching
- Job Fairs
- On-Site Employer Recruitment
- Labor Market Information
- Community Resource Information

