



Welcome!

## Child Development and Education

Our top mission while working with priority populations is to provide the most thorough and supportive resources in order to help our families work towards reaching their child's optimal growth and development, by offering them the necessary tools.

By compiling a list of programs, we guide each family through the process of accessing the resources which promote family literacy, social services, case management, etc.

We are able to refer families to local licensed family therapists, mental health professionals and many more services listed on this pamphlet.

## Child Development and Education, Inc.

### Haverhill Staff Directory

**Office Director:**

Ybelka Ortiz  
EMAIL: [yortiz@cdedu.co](mailto:yortiz@cdedu.co)

**Administrator Director**

Yazmin Marrero  
EMAIL: [ymarrero@cdedu.co](mailto:ymarrero@cdedu.co)

Minerva De Jesus-Iraola  
EMAIL: [mdejesus-iraolae@cdedu.co](mailto:mdejesus-iraolae@cdedu.co)

**Contract Manager**

Yomayra Jaquez  
EMAIL: [yjaquez@cdedu.co](mailto:yjaquez@cdedu.co)

**Parent Fee Administrator:**

Jennis Olivo  
EMAIL: [jolivo@cdedu.co](mailto:jolivo@cdedu.co)

**CDE Administrator:**

Dilenia Cabral  
EMAIL: [dcabral@cdedu.co](mailto:dcabral@cdedu.co)

Yarannis Batista  
EMAIL: [ybatista@cdedu.co](mailto:ybatista@cdedu.co)

**Family Child Care Coordinator:**

Maribel Saldarriaga  
EMAIL: [msaldarriaga@cdedu.co](mailto:msaldarriaga@cdedu.co)

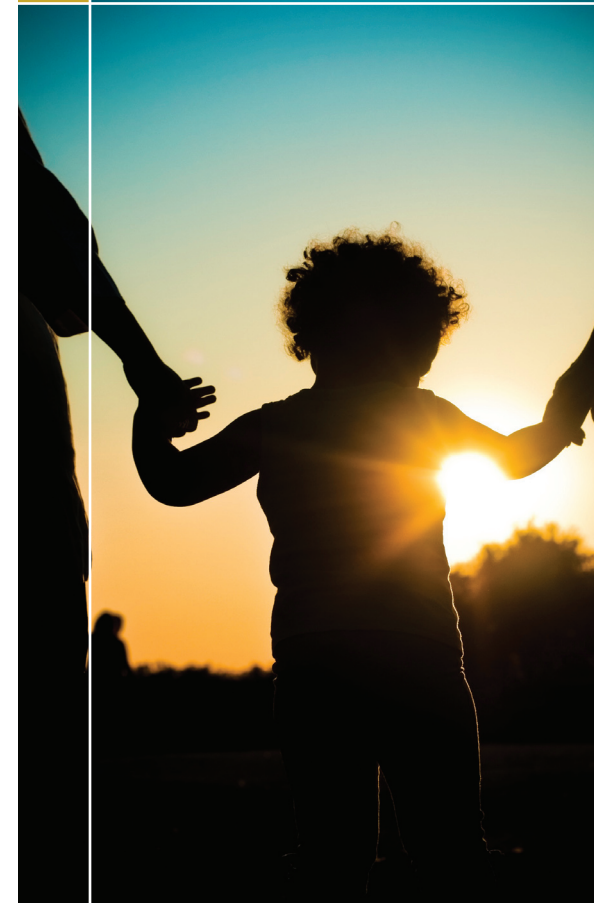
**Child Development and Education, Inc.**

12 Methuen Street, Lawrence, MA 01840  
(Phone): **978-687-9133** (Fax): **978-687-9533**  
[www.cdedu.us](http://www.cdedu.us) / [info@cdedu.us](mailto:info@cdedu.us)

## Child Development and Education

A Resource Guide for Priority Population Families

**HAVERHILL**



# Resource Guide

## Angel Care Kids Therapy

969 Main St  
Haverhill, MA 01830  
(978)521-6150  
[www.angelcarekids.com](http://www.angelcarekids.com)

### Services:

- Occupational Therapy
- Speech and Language Therapy
- Dynamic Listening
- Evaluations Sensory Integration
- Therapeutic Groups

## Arbour Counseling Services

116 Summer St  
Haverhill, MA 01830  
(978)373-7010  
[www.arbourhealth.com](http://www.arbourhealth.com)

### Services:

- Attention Deficit Disorder (child & adult)
- Behavior Disorders
- Child & Adolescent Psychiatry
- Domestic Violence



## Massachusetts Society for the Prevention of Cruelty to Children (MSPCC)

15 Union Street, Bldg. E, Suite 115  
Lawrence, MA 01840  
(978) 682-9222  
[www.mspcc.org](http://www.mspcc.org)

### Services:

- Funded by EEC for children in childcare settings provided by Children's Friend, Open to all in the northeast region

## South Bay Community Services

360 Merrimack Street Building 5 Entrance F  
Lawrence Ma 01843  
(978) 620-0290  
[www.southbaycommunityservices.com](http://www.southbaycommunityservices.com)

### Services:

- Early Childhood Services
- Early Intervention/Birth to Three Services
- Children's Behavioral Health Initiative Services
- Mental Health and Substance Abuse Counseling Services

## Autism Care Partners

439 South Union St.  
Building 1, Suite 116  
Lawrence, MA 01843  
800-679-3609  
[www.autismcarepartners.com](http://www.autismcarepartners.com)

## Leahy Behavioral Services

12 Methuen Street  
Lawrence Ma 01840  
(978) 683-3128  
[www.bilhbehavioral.org](http://www.bilhbehavioral.org)

### Services:

- Individual, family, group, couples Therapy
- Psychiatric Services
- Crisis Management
- Youth Social Skills Groups
- Adult Wellness Groups

## Professional Center for Child Development

439 S. Union Street  
Lawrence, MA 01843  
(978) 688-5070  
[www.theprofessionalcenter.org](http://www.theprofessionalcenter.org)

### Services:

- Early Intervention
- Pediatric Therapy Program
- 2x2 Toddler Play Groups
- Regional Consultation Program

