



Welcome!

## Child Development and Education

Our top mission while working with priority populations is to provide the most thorough and supportive resources in order to help our families work towards reaching their child's optimal growth and development, by offering them the necessary tools.

By compiling a list of programs, we guide each family through the process of accessing the resources which promote family literacy, social services, case management, etc.

We are able to refer families to local licensed family therapists, mental health professionals and many more services listed on this pamphlet.

## Child Development and Education, Inc.

### West Boylston Staff Directory

**Office Director:**

Gail Bissonnette - [gbissonnette@cdedu.co](mailto:gbissonnette@cdedu.co)

**Administrator Director:**

Stephanie Beauregard - [sbeauregard@cdedu.co](mailto:sbeauregard@cdedu.co)

**Contract Manager:**

Wanda Rivera - [wrivera@cdedu.co](mailto:wrivera@cdedu.co)

**Parent Fee Administrator:**

Fran Irizarry - [firizarry@cdedu.co](mailto:firizarry@cdedu.co)

**Payroll /Billing Administrators:**

Shirley Cornejo - [scornejo@cdedu.co](mailto:scornejo@cdedu.co)

Mirian Amezcua - [mamezcua@cdedu.co](mailto:mamezcua@cdedu.co)

**Family Child Care Coordinators:**

Amparo Munoz  
Alma Matos  
Yvonne Amezcua  
Blanca Molina  
Katiucia Goncalves

**Coaching/Teen Parent Liaison:**

Ana Farias

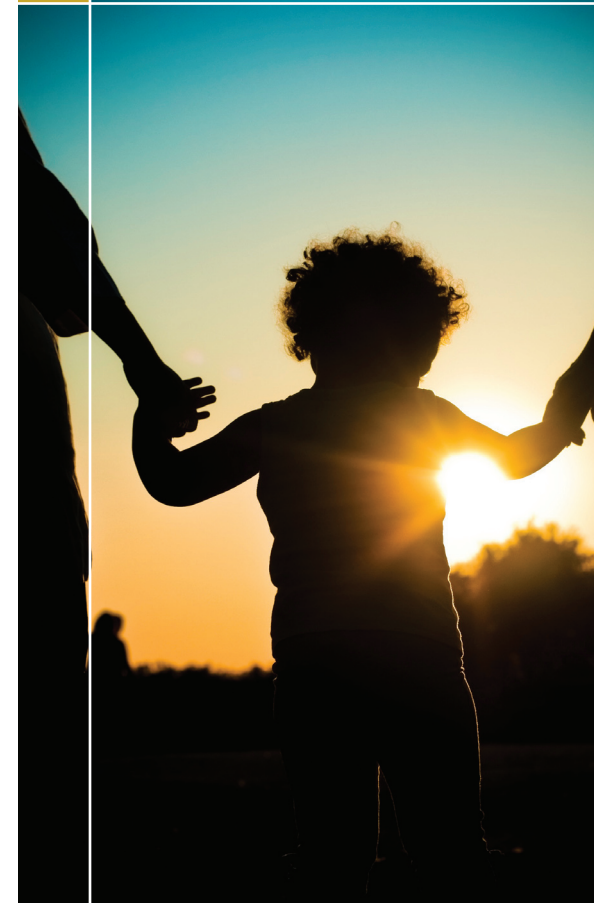
**Child Development and Education, Inc.**

354 West Boylston Street,  
Suite 112, West Boylston, MA 01583  
(Phone): **508-852-5020** (Fax): **508-852-5657**  
[www.cdedu.us](http://www.cdedu.us) / [info@cdedu.us](mailto:info@cdedu.us)

## Child Development and Education

A Resource Guide for Priority Population Families

### WEST BOYLSTON



# Resource Guide

## Battered Woman's Resources

Fitchburg-978-345-1008  
Greater Worcester-508-755-9030  
Framingham-508-626-8686

### Services:

Emergency food/clothing, advocacy, support groups, visiting nurse, wheelchair accessible, counseling, referral, mental health and transitional program, Spanish speaking staff, childcare, teen living program, legal services.

## Catholic Charities

- Greater Worcester- 508-753-3084
- Leominster-978-840-0696
- Athol-978-249-4563

### Services:

- Counseling
- Adult Education
- Healthy Families
- Young Parent Program

## Early Intervention

[www.massfamilyties.org/ei/eicity.php](http://www.massfamilyties.org/ei/eicity.php)  
Leominster/Fitchburg 978-840-9354  
REACH Athol/Orange 413-665-8717  
EC Alliance Framingham 508-782-6932

### Services:

Early Intervention is a developmental service available to the families of children from birth up to the third birthday, for whom there are developmental concerns due to identified disabilities, or whose typical development is at risk due to certain birth or environmental circumstances.



## Heating Assistance Programs

- Good Neighbors Energy fund 800-334-3047
- National Grid 800-322-3223
- MOC-Fuel Assistance 978-345-7040
- SMOC-Framingham 508-620-1230
- Unitil Fitchburg 888-301-7700

## Healthy Families

Gardner 978-632-1230  
Framingham 508-881-9495  
Orange 413-475-1545  
WIC 800-942-1007

### Services:

- Parenting support resources
- Parenting classes
- Personal goals
- For young first time mom and dads

## Individuals at Risk

- Child at risk hotline 800-792-5200
- Parental Stress line 800-632-8188
- Parents helping parents 800-882-1250
- Disabled person protection 800-426-9009

## Legal Aid

- Fitchburg 508-752-3718
- Worcester 800-649-3718
- North Adams 413-664-4531
- Framingham 508-620-1830

### Services:

Families and Children Unit provides legal assistance to victims of domestic violence, restraining orders, divorce, paternity, custody and visitation, child support, spousal support, property division and health insurance, relocation, including filing name change petitions in appropriate situations.

## Massachusetts Society for the Prevention of Cruelty to Children (MSPCC)

335 Chandler St  
Worcester, MA 01602  
508-753-2967  
<http://www.mspcc.org/>

### Services:

Funded by the Department of Early Education and Care for children in childcare settings provided by Children's Friend, Open to all in the northeast region.

## Medical Resources

Community Health Links  
Fitchburg 978-665-5901  
Gardner 978-665-5980  
Athol 978-249-3511  
Worcester 508-860-1000

### Services:

- Primary Health care
- Dental
- Free/low cost walk in clinics
- Behavioral Health
- Servicing children and families

## Worcester County Food Banks

[www.foodbank.org](http://www.foodbank.org)

- Fitchburg/Leominster community action center 978-342-8617
- Loaves and Fishes Devens 978-772-4627
- Gardner community action 978-632-1350
- Spanish American center 978-534-3145
- UWTC Framingham 888-811-3291
- Salvation Army Athol 978-249-8111
- Catholic Charities Worcester 508-860-2250

### Services:

Worcester County Food Bank (WCFB) is aware of many resources available to provide additional food and nutrition assistance for individuals and families in need. If you are in need of additional food and nutrition assistance, please contact these programs directly to learn more.

