



W e l c o m e !

Child Development and Education

Our top mission while working with priority populations is to provide the most thorough and supportive resources in order to help our families work towards reaching their child's optimal growth and development, by offering them the necessary tools.

By compiling a list of programs, we guide each family through the process of accessing the resources which promote family literacy, social services, case management, etc.

We are able to refer families to local licensed family therapists, mental health professionals and many more services listed on this pamphlet.

Child Development and Education, Inc.

Lynn Staff Directory

Office Director:

Natalie Morillo-Cano - ncano@cdedu.co

Administrator Director:

April Aguirre - aaguirre@cdedu.co

Contract Manager:

Patricia Jimenez - pjimenez@cdedu.co

Parent Fee Administrator:

Maria Rodriguez - mrodriguez@cdedu.co

Payroll Administrators:

Edith Garcia - m.garcia@cdedu.co

Family Child Care Coordinators:

Diana Castillo - dcastillo@cdedu.co

Victoria Duran - vduran@cdedu.co

Jayssyka O'Farrill - jofarrill@cdedu.co

Judith Villar - jvillar@cdedu.co

Child Development and Education, Inc.

181 Union Street, Suite K, Lynn, MA 01901

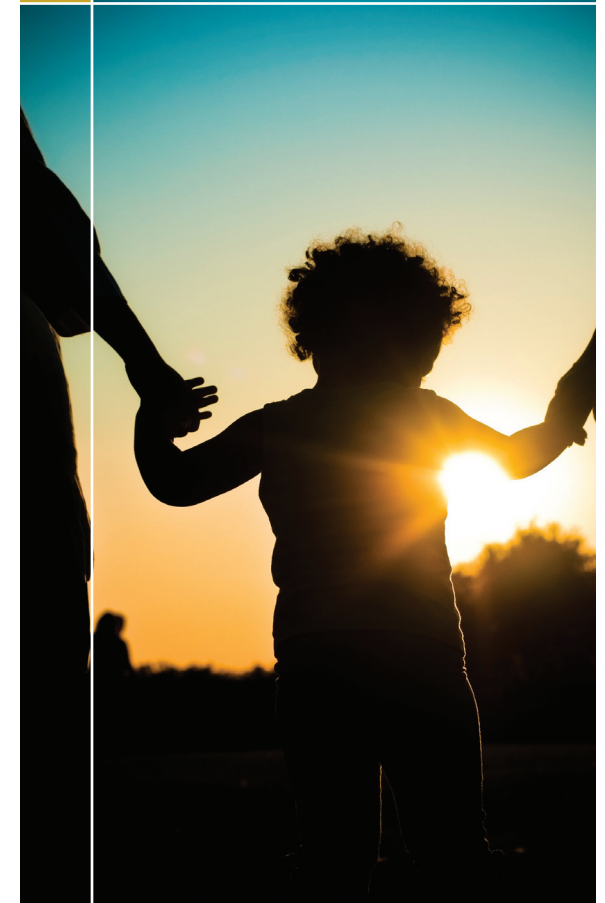
(Phone): **781-596-0461** (Fax): **781-596-0463**

www.cdedu.us / info@cdedu.us

Child Development and Education

A Resource Guide for Priority
Population Families

LYNN



Resource Guide

Children's Friend and Family Services

112 Market Street, 2nd Fl. Lynn MA 01901
(781) 592-5691
<http://www.childrensfriend.net>

Services:

- Community Service Agency
- In-Home Therapy
- Therapeutic Mentoring
- Outpatient Mental Health
- Trauma Focused CBT
- Youth Mentoring
- Medication Management

Catholic Charities

117 N Common Street, Lynn, MA 01902
(781) 593-2312
<http://www.ccab.org>

Services:

- Counseling
- Adult Education
- Healthy Families
- Young Parent Program

HAWC

27 Congress Street, Salem, MA 01970
(978) 744-8552
<https://www.hawcdv.org>

- Parent and Child Trauma Recovery
- Emergency Family Shelter
- Community Outreach
- Support Groups
- Community Outreach
- Support Groups



Family & Children's Services

111 N Common Street, Lynn, MA 01902
(781) 598-5517
<http://www.fcslynn.org>

Services:

- Mental health assessments and consultations to child care providers, especially children, youth and families.

Lynn Community Connections Coalition

298 Union Street #6, Lynn, MA 01902
(781) 477-2902
<http://www.lynnccc.webs.com>

Services:

- Open to families in Lynn and the surrounding communities, families from all walks of life come into the agency. Services include nurturing parenting program as well as connecting families to an array of services.

Massachusetts Society for the Prevention of Cruelty to Children (MSPCC)

439 Union Street Suite 1-110, Lawrence, MA 01843
(978) 682-9222
<http://www.mspcc.org>

Services:

- Funded by EEC for children in childcare settings provided by Children's Friend, Open to all in the northeast region.

North Shore Infant Toddler Program/Early Intervention Services

275 Lafayette Street, Salem, MA 01970
978-744-7037
<http://www.cpemass.org>

Services:

- Family Support
- Occupational Therapy
- Speech Therapy
- Case Management

Lynn Housing Authority

9 Meadow Court, Lynn, MA 01904

(781) 593-2378

<http://www.lhand.org>

Services:

- Foster economic independence and providing homeownership opportunities.

North Shore Infant Toddler Program/Early Intervention Services

275 Lafayette Street, Salem, MA 01970
978-744-7037
<http://www.cpemass.org>

Services:

- Family Support
- Occupational Therapy
- Physical Therapy
- Speech Therapy
- Case Management

Pyramid Builders Associates, Inc.

243 Western Avenue, Lynn, MA 01902
(781) 780-3566
<http://www.pyramidbuilders.org>

Services:

- Anger Management
- Career Resources
- Couples Therapy
- Clinical Services
- Family Therapy
- Group Therapy
- Home-Based Family Therapy
- Individual Therapy

South Bay Community Services

181 Union Street Suite J, Lynn, MA 01901
781-244-1950
<https://www.southbaycommunityservices.com>

Services:

- Early Childhood Services
- Early Intervention/Birth to Three Services
- Children's Behavioral Health Initiative Services
- Mental Health and Substance Abuse Counseling Services

