



Welcome!

Child Development and Education

Our top mission while working with priority populations is to provide the most thorough and supportive resources in order to help our families work towards reaching their child's optimal growth and development, by offering them the necessary tools.

By compiling a list of programs, we guide each family through the process of accessing the resources which promote family literacy, social services, case management, etc.

We are able to refer families to local licensed family therapists, mental health professionals and many more services listed on this pamphlet.

Child Development and Education, Inc.

Lowell Staff Directory

Office Director: Ybelka Ortiz

EMAIL: yortiz@cdedu.co

Administrative Director:

Yazmin Marrero

EMAIL: ymarrero@cdedu.co

Contract Manager:

Minerva De Jesus Iraola

EMAIL: mdejesus-iraolae@cdedu.co

Parent Fee Administrator:

Jennis Olivo

EMAIL: jolivo@cdedu.co

Payroll Administrator:

Priscilla Paredes

EMAIL: pparedes@cdedu.co

CDE Administrator:

Dilenia Cabral - dcabral@cdedu.co

Yarannis Batistal - ybatista@cdedu.co

Family Child Care Coordinators:

Zaida Cochran

Soris Villar

Child Development and Education, Inc.

12 Methuen Street, Lawrence, MA 01840

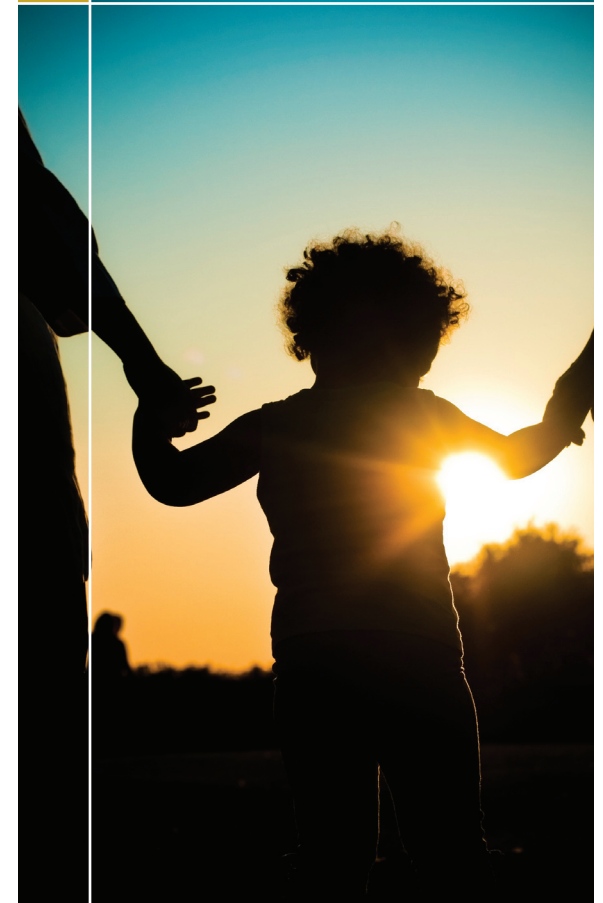
(Phone): **978-687-9133** (Fax): **978-687-9533**

www.cdedu.us / info@cdedu.us

Child Development and Education

A Resource Guide for Priority Population Families

LOWELL



Resource Guide

South Bay Community Services Lowell Early Childhood Services

22 Old Canal Drive
Lowell, MA 01851
(978) 452-1736
www.southbaycommunityservices.com

Services:

- Early Childhood Services
- Children's Behavioral Health Initiative Services
- Mental Health & Substance Abuse Counseling

Lowell Public Schools Early Childhood Programs & Services

155 Merrimack Street
Lowell, MA 01852
Contact: Lisa Van Thiel
(978) 674-2051
www.lowell.k12.ma.us

Services:

- Parent Child Home Program
- Playgroups
- Positive Solutions for Families
- Special Education Assessment



Thom Child & Family Services Anne Sullivan Center

126 Phoenix Avenue
Lowell, MA 01852
(978) 453-8331
www.thomchild.org/anne-sullivan-center.htm

Services:

- Early Intervention Programs
- Pregnancy & Newborn Support

Leahy Behavioral Services

12 Methuen Street
Lawrence, MA 01840
(978) 683-3128
www.bilhbehavioral.org

Services:

- Individual, family, group, couples therapy
- Psychiatric Services
- Crisis management
- Youth Social Skills Groups
- Adult Wellness Groups

Massachusetts Society for the Prevention of Cruelty to Children (MSPCC)

15 Union Street, Bldg. E, Suite 115
Lawrence, MA 01840
(978) 682-9222
www.mspcc.org

Services:

- Funded by EEC for children in childcare settings provided by Children's Friend, Open to all in the northeast region.

Autism Care Partners

439 South Union St.
Building 1, Suite 116
Lawrence, MA 01843
800-679-3609
www.autismcarepartners.com

