



Welcome!

Child Development and Education

Our top mission while working with priority populations is to provide the most thorough and supportive resources in order to help our families work towards reaching their child's optimal growth and development, by offering them the necessary tools.

By compiling a list of programs, we guide each family through the process of accessing the resources which promote family literacy, social services, case management, etc.

We are able to refer families to local licensed family therapists, mental health professionals and many more services listed on this pamphlet.

Child Development and Education, Inc.

Brockton Staff Directory

Office Director:

Molly Barnes - mbarnes@cdedu.co

Contract Managers:

Gretchen Cabral - gcabral@cdedu.co

Kenya Williams - kwilliams@cdedu.co

Administrative Director:

Maritza Ruiz - mrui@cdedu.co

Payroll Administrator:

Emilia Goncalves - egoncalves@cdedu.co

Family Child Care Coordinator:

Alexandria Lewis - alewis@cdedu.co

Meghan McNamara - mmcnamara@cdedu.co

Child Development and Education, Inc.

231 Main Street, Suite 100, Brockton, MA 02301

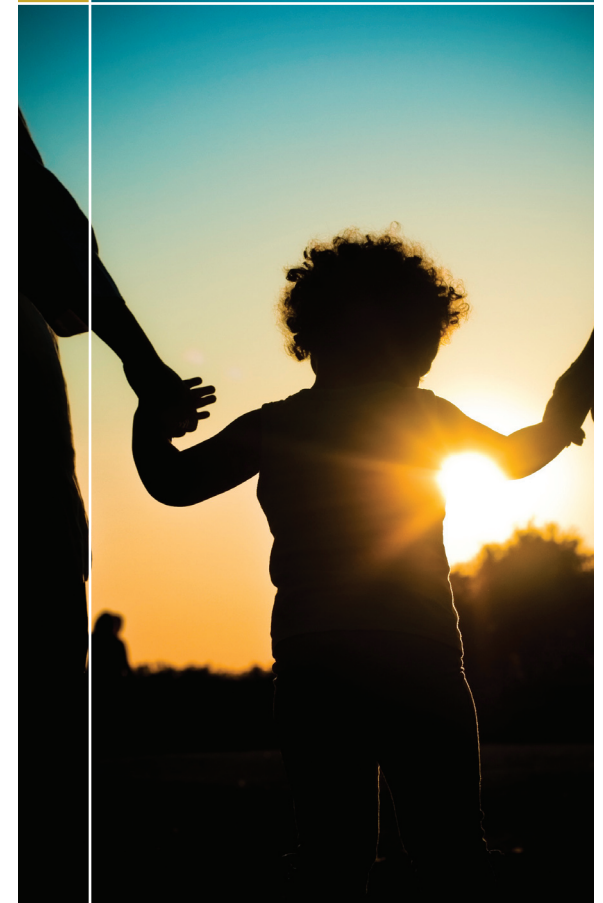
(Phone): 508-583-4714 (Fax): 508-583-4801

www.cdedu.us / info@cdedu.us

Child Development and Education

A Resource Guide for Priority Population Families

BROCKTON



Resource Guide

Justice Resource Institute

35 Summer Street
Taunton, MA 02780
(508) 828-1308
jri.org

Services:

- On-site observations of children
- Develop individualized intervention plans
- Engage and support families
- Offer resources & referral information

Brockton Neighborhood Health

63 Main Street
Brockton, MA 02301
(508) 559-6699
www.bnhc.org/main.html

Services:

- A multicultural organization that collaborates with community agencies and residents to provide high quality comprehensive health care that is responsive to community health needs and is linguistically, culturally and financially accessible.

Self Help, Inc.

selfhelpinc.org
1362 Main Street, Brockton, MA 02301
(508) 588-5440

- Fuel Assistance
- Emergency

370 Howard Street, Brockton, MA 02301
(508) 587-1716

- Headstart



BAMSI

801 Pleasant Street
Brockton, MA 02301
(508) 586-5977
www.bamsi.org

Services:

- Speech and Language Therapy
- Occupational Therapy
- Physical Therapy
- Developmental Monitoring

Healthy Families

942 West Chestnut Street
Brockton, MA 02301
(508) 583-3005
healthimperatives.org/family-support

Services:

- A home-based parent support and coaching program available for first-time parents age 20 and under. Available from pregnancy until your child's third birthday.

Brockton Housing Authority

45 Goddard Road
Brockton, MA 02301
(508) 588-6880
www.brocktonhousingauthority.com

Services:

- Education & Job Training
- Counseling & Social Service Assistance

South Bay Early Intervention Services

1115 W. Chestnut Street
Brockton, MA 02301
(508) 521-2200
www.southbaycommunityservices.com

Services:

- Day Services
- Early Childhood Services
- Children's Behavioral Health Initiative Services
- Mental Health and Substance Abuse Counseling

Career Works

34 School Street
Brockton, MA 02301
(508) 513-3400
www.careerworks.org

Services:

- Free trainings & workshops
- Help applying for jobs
- Assistance applying for unemployment insurance.

Department of Transitional Assistance

60 Main Street
Brockton, MA 02301
(508) 895-7000
www.mass.gov/eohhs/gov/departments/dta

Services:

- Food Assistance: SNAP
- Job Assistance
- Cash Assistance

Department of Children and Families

110 Mulberry Street
Brockton, MA 02302 - (508) 894-3700
www.mass.gov/eohhs/gov/departments/dcf

Services:

- Child Abuse & Neglect
- Foster Care
- Adoption
- Adolescent Services
- Health & Medical Services

Brockton Coordinated Family & Community Engagement

211 Crescent Street
Brockton, MA 02301 - (508) 580-7491
www.bpsma.org/community/coordinated-family-community-engagement

Services:

- Family Support
- Community activities
- Support Groups & Playgroups for families
- Community Partnerships – Information, resources, and specific referrals to community services

